

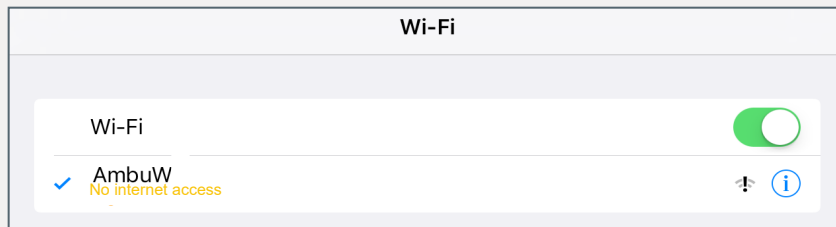
Quick Guide Ambu® Manikin Management Module

Metronome Usage

The metronome gives the possibility to show the frequency which to do compressions with.

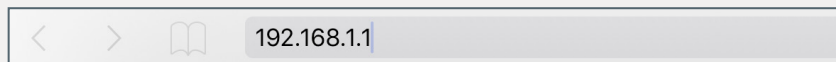
In the following sections you will find out how to the metronome works.

1. Connect the end device with the training device



First turn on the training device by briefly pressing the power button located in the lower torso. As soon as the LED lights of the power button is constantly lit, you can connect to the training device via WiFi.

To do so, select the wireless network „AmbuW“.



Open the browser and enter <http://Ambu.login> or 192.168.1.1 in the address bar and press enter in order to reach the start screen of the Ambu Manikin Management Module.

2. How to use the metronome

Ambu® Manikin Management Module

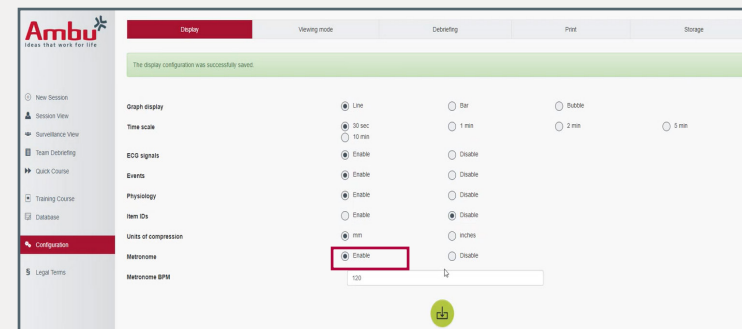
Controlled session

Viewing mode

There are two ways to use it:

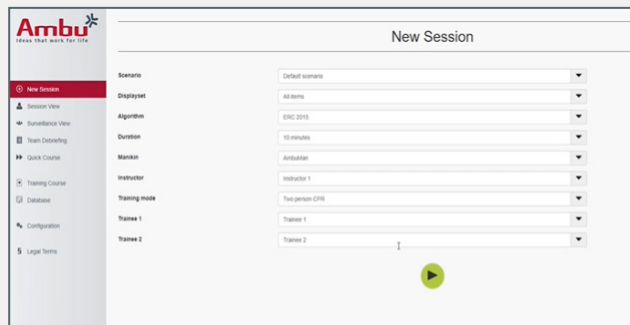
1. First Option: Controlled Session

After accessing the page, click on the „Controlled session“ button.

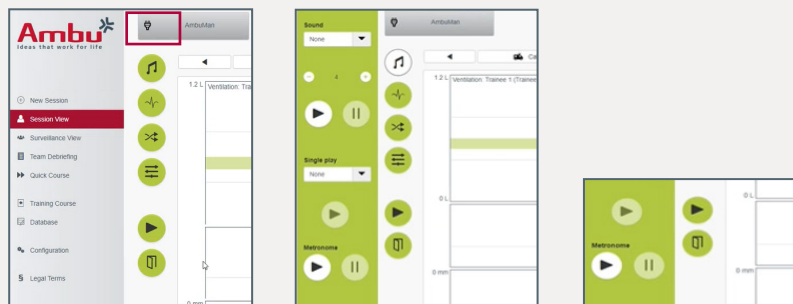


Click on “Configuration”. Here the matronome can be enable or disable In oder to use it click on “Enable”, define the speed and save.

How to use the metronome




Now is a part of the session and play the Default Session.

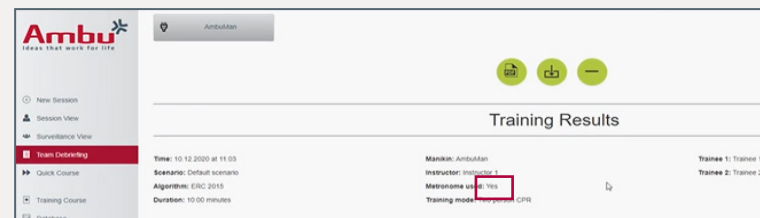


Click on the Sound icon, a sound menu will be displayed where the metronome is available.

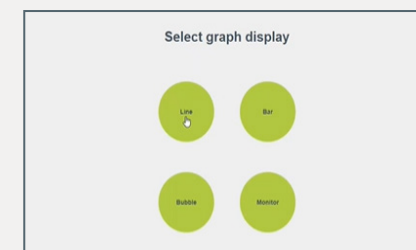
With AmbuMan Airway, Wireless and Debib can be possible just the visualization of the metronome, not the sound (3rd image).

Run and the sound is played from the device it was activated.

When the session is finished by clicking  then you go to Team Debriefing. In the result training section states whether the matronome has been used or not.



2. Second Option: Viewing mode.



Select „Viewing Mode“ and then select a graph display.



The metronome can be activated here as well.

This is played from the trainer's device. Instructor and trainee work independently.